

Toothed channel type JZA K 41/22

JZA K 41/22

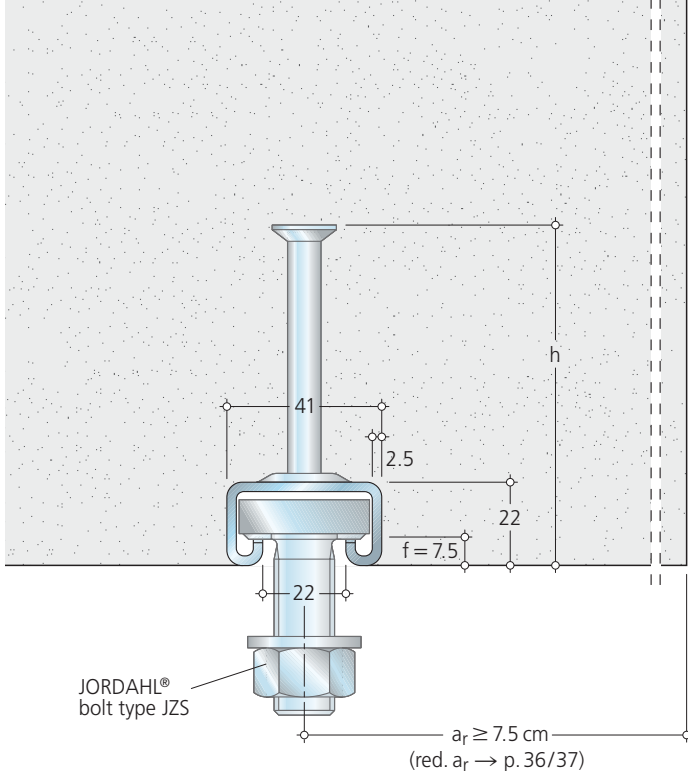
Load range 5.0 kN
7.0 kN

Weight with anchors: 2.29 kg/m⁵⁾

Design resistance to Eurocode

$$F_{Rd} = \text{perm. } F \times 1.4$$

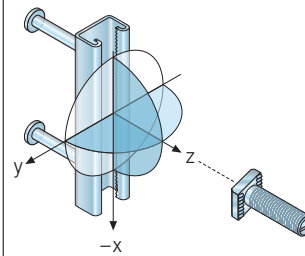
The design values of the load bearing capacities are shown in *italics* in the tables.



In conjunction with the toothed bolt JZS, JORDAHL® anchor channels JZA can also absorb loads in all directions.

Stress in all directions

Toothed channel type JZA K 41/22



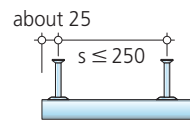
In the event of simultaneous stressing in tension (z) or transverse tension (y) at right angles to the channel axis, and longitudinal tension parallel to the channel axis, the resultant load must not exceed the value perm. F = 5.0 kN with an individual load and perm. F = 3.5 kN with paired loads.

$$\sqrt{F_x^2 + F_z^2 + F_y^2} \leq \text{perm. } F$$

Type	JZA K 41/22	
Material Design	S235JR fv	1.4401/1.4404/1.4571 ³⁾ (A4) round anchor A4
permissible point load [kN]¹⁾ ≥ C 20/25	5.0 (4.0) ⁴⁾ 7.0 (5.6) ⁴⁾	
Anchor design²⁾	R	R
Installation height h [mm]	90 (60)	90
Filler	Polystyrene filling (PS)	

- 1) Max. permissible load as per Building Approval. Permissible loads for the respective application → p. 33, C 20/25 Δ B 25.
- 2) Anchor design: R = round anchor (standard design).
- 3) Can also be supplied upon request in stainless steel 1.4529/1.4547 for corrosion resistance class IV.
- 4) With shortened anchor (bracketed values) outside the Building approval. We design load bearing capacities dependent on edge spacings and concrete qualities on a project basis.
- 5) Weight per metre for mill finish steel (for galvanized profiles: weight per metre × 1,10) (for stainless steel: weight per metre × 1,02)

Lengths supplied: JZA K 41/22



	Length [mm]	Anchor (no.)	Anchor spacing s
Short pieces	100	2	50
	150	2	100
	200	2	150
	250	2	200
	300	2	250
	350 – 550	3	≤ 250
	600 – 800	4	≤ 250
850 – 1050	5	≤ 250	
Cut lengths	1050 < L < 6000 on request		≤ 250
Stock lengths	6000 (-0/+50)	25	≤ 250

**Ordering example
Anchor channels**

JZA - K 41/22 - 1050 - fv

Type Profile Length [mm] Design

**Ordering example
JORDAHL® bolts type JZS**

JZS - M 16 × 100 - fv

Type Thread Length [mm] Design

 Ø



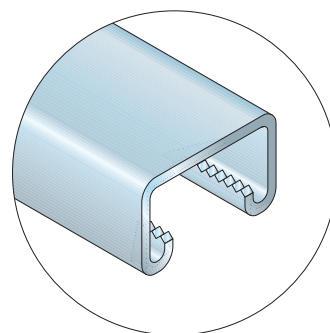
Toothed anchor channels in concrete masts for fixing the most equipment.

JORDAHL® bolts type JZS

Bottom view

fv 8.8 = hot-dip galvanized in strength class 8.8
A4-50 = stainless steel 1.4401/1.4404/1.4571 in strength class 50

Bolt range JZS		
Length l [mm]	JZS M 12	JZS M 16
35	fv 8.8 A4-50	A4-50
50	fv 8.8 A4-50	fv 8.8 A4-50
80	A4-50	
100		fv 8.8



Permissible bolt loads <i>under tension, oblique tension or shear load</i>					
Type Ø	Recommended tightening torque M _A [Nm] ⁴⁾	Permissible load perm. F ¹⁾ /F _{Rd} [kN]		Permissible bending moment perm. M ²⁾³⁾ /M _{Rd} [Nm]	
		8.8	A4-50	8.8	A4-50
JZSM 12	50	19.4 27.2	9.3 13.0	43.7 61.2	15.3 21.4
JZSM 16	90	36.1 50.5	17.3 24.2	111.0 155.4	38.8 54.3

Notes → p. 40

Associated edge spacings [cm]

Notes and further minimum spacings → p. 35